



# Annual Report

Transforming lives and  
communities through partnership

2017

# Dear Friends,

With the Lord's direction, 2017 was a year of healthy change, which has built a renewed foundation for growth for Children's HopeChest. We are so thankful that you are walking with us on this remarkable journey!

The most impactful change made in 2017 was the decision to change the fiscal year from a "January to December calendar fiscal year-end" to an "October to September fiscal year-end." Many charitable organizations utilize a similar fiscal year because the historically large bumps in December donations are better managed as a function of the end of the first quarter of an annual budget rather than in the final moments of a fiscal year based on a calendar year. With this in mind, you will see a nine-month picture, reflecting our transitory year in the financials which does not include our largest giving quarter.

We hope that you are encouraged by the statistics found in this year's Annual Report. Although our fiscal year was short, our impact was mighty. Over the fiscal year we launched eight new community partnerships and celebrated 10 years of partnership with Swaziland! Together with your support and the HopeChest in-country staff, we're seeing lives and communities transformed around the globe.

As we move into 2018, we hope that you will be inspired to continue changing lives and partnering with us to restore hope and dignity to children's lives all across the globe.

In His grip,



Ken Sparks  
President & CEO



# 10,750+ CHILDREN SPONSORED 34,000+ CHILDREN SERVED



**15,829**

LETTERS SENT  
FROM SPONSORED  
CHILDREN



**763**

PEOPLE TRAVELED  
ON **83** PARTNER VISITS



**12**

NEW PARTNERSHIPS  
AND **10** VISION TRIPS



*\*stats for this page are from all 2017*

## UGANDA

**49** STUDENTS GRADUATED FROM OUR CAREPOINTS AND  
RECEIVED BUSINESS/VOCATIONAL START-UP TOOLS

**374** CHILDREN/FAMILIES BENEFITED FROM ANIMAL  
HUSBANDRY PROJECTS THAT STARTED IN 2017

## SWAZILAND

**11** STUDENTS GRADUATED THE SWAZILAND  
LEADERSHIP ACADEMY

**188** CHILDREN GRADUATED THE GRIEF COUNSELING  
COURSE, NGESIKHATSI

## GUATEMALA

**5** NEW COMMUNITY PARTNERS

**500** INDIVIDUALS BENEFITED FROM A MEDICAL CLINIC  
AT COLEGIO ISRAEL CAREPOINT

EXCEEDED OVER **2,000** SPONSORED CHILDREN

## RUSSIA

**376** PARTICIPANTS IN THE MENTORSHIP PROGRAM

**44** PARTICIPANTS OF THE YOUNG MOTHERS PROGRAM  
RECEIVED SOCIAL, PSYCHOLOGICAL, LEGAL, MEDICAL,  
AND HUMANITARIAN AID

## ETHIOPIA

### TYPES OF INCOME-GENERATING ACTIVITIES THAT FLOURISHED IN 2017:

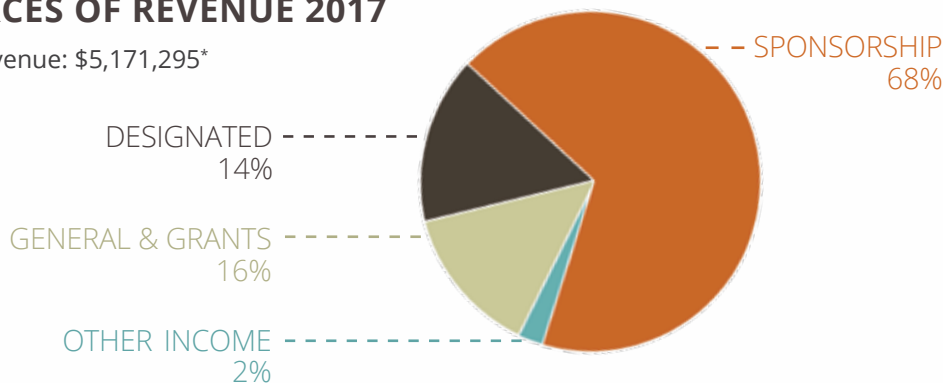
PETTY TRADE, WATER KIOSKS AND WATER POINTS, SHOE  
MAKING, TAILORING, INJERA MAKING AND SELLING, COFFEE  
BARISTA TRAINING, ANIMAL HUSBANDRY, DONKEY CART  
(TRANSPORTING LARGE ITEMS), GRAIN MILL, APPLE  
ORCHARD, SAVINGS AND LOAN ASSOCIATIONS

# Committed to Financial Integrity

We are passionately committed to honoring the name of Jesus in everything we do, including being trustworthy stewards of your financial gifts. We strive to achieve the utmost level of transparency with your dollars, faithfully and prayerfully investing every dollar entrusted to us for the transformation of lives around the world. As members in good standing of the ECFA, a Platinum-Level GuideStar Participant, recipients of Charity Navigator's 4-Star rating, and a "Certified Transparent" rating from Excellence in Giving, you can be confident that the information shared in our 2017 Annual Report is audited, accurate, and transparent.

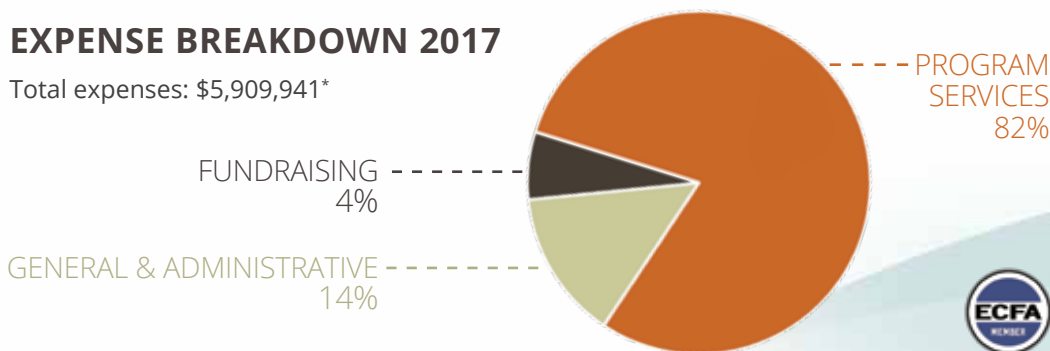
## SOURCES OF REVENUE 2017

Total revenue: \$5,171,295\*



## EXPENSE BREAKDOWN 2017

Total expenses: \$5,909,941\*



\*Represents a nine-month "year" due to a fiscal year change. See letter from CEO on inside front cover.

PO BOX 1190 | PALMER LAKE, CO. 80133 | P. 719.487.7800 | HOPECHEST.ORG

